

PRODUCT NAME
Pilot acting Intrinsic Safe Solenoid Valve
DESCRIPTION OF THE PRODUCT

Based on NAMUR standard, the NAMUR valve can be adapted for 3/2 NC or 5/2 functions. Armed with Ex ia IIC T6 Ga thermoplastic enclosure coil, this intrinsic safe Namur solenoid valve is available for the operation of double acting and spring return pneumatic devices located in corrosive and hazardous (Class 1 Zone 0) atmospheres.



APPROVED BY

ATEX **IEC** **TECEX** **CE** **IP67**

Coil Specification: QC6F (ALV110Q1C6F)

Coil Enclosure	Thermoplastic
Cable connection	Flying leads (cable length 1 m and other lengths on request)
Operating Voltage & Electric current	13.0~24VDC, 22~42mA at -20°C~60°C 13.3~24VDC, 22~67mA at -40°C~60°C
Insulation Protection	H Class
Insulated voltage	1000V
Duty factor	100% ED
Area Classification	Ex ia IIC T6 Ga, Ex ia IIIC T85°C Db

BODY TECHNICAL DATA

Body	Extruded Aluminum + anodized coated
Seal	Buna N
Fasteners	Stainless steel
Function	5/2 and 3/2NC, Monostable
Manual Override	Manual screw on the body
Air Ports	G1/4" or NPT
Flow rate	CV =1.1 (19.63mm ²)
Mounting	24×32 Namur
Working Medium	≤ 40µm filtered and dried air
Working Temp.	-20°C~60°C (optional: -40°C~60°C)
Weather Proof	IP67

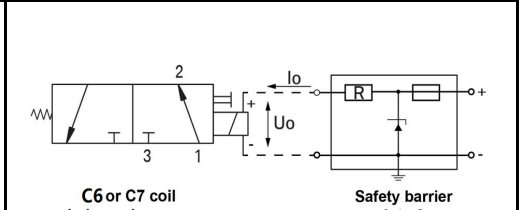
Supply Specifications for Coil of C6

U max : in	30VDC
I max : in	650mA
W max : in	2980mW
C max : in	0
L max : in	0

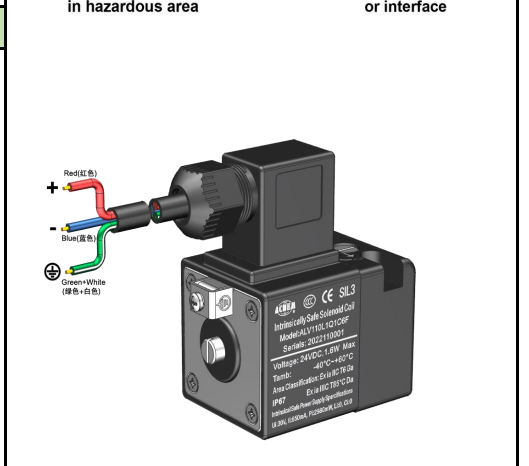
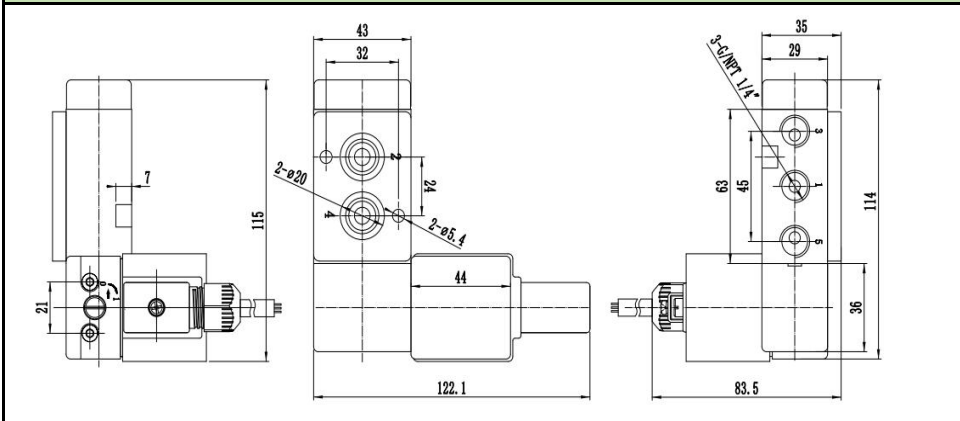
Wiring connection instructions

The electrical connection between the safety barrier placed in safe zone and the C6 series intrinsic safe solenoid valve installed in a hazardous zone can be made using the flying leads cable (cable length 1 m and other lengths on request). Note that the solenoid valve has positive and negative wiring requirements, the red line is positive, the blue line is negative, and the green and white double color line is grounding. Refer to the bottom-right figure please.

Wiring with barrier



DIMENSION AND DRAWING



*For continuous improvement of the product, we reserve the right to alter the technical data in this data sheet.