

ALLIED Data Sheet

Product ID ALSD400C1P2M2

PRODUCT NAME

Valve Top Controller



MODEL NO.

ALSD400C1P2M2

DESCRIPTION OF THE PRODUCT

The valve top controller is an optimizing solution to integrate mechanical sensors, solenoid coil and spool valve together and use for on/off valve control and position sensing in the process industries.

APPROVED BY



NEMA4,4X **IP66**

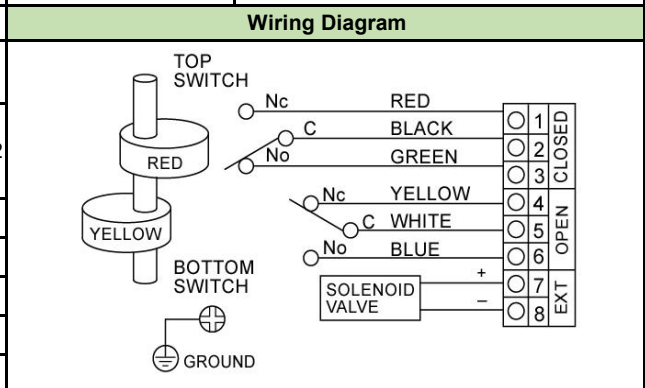
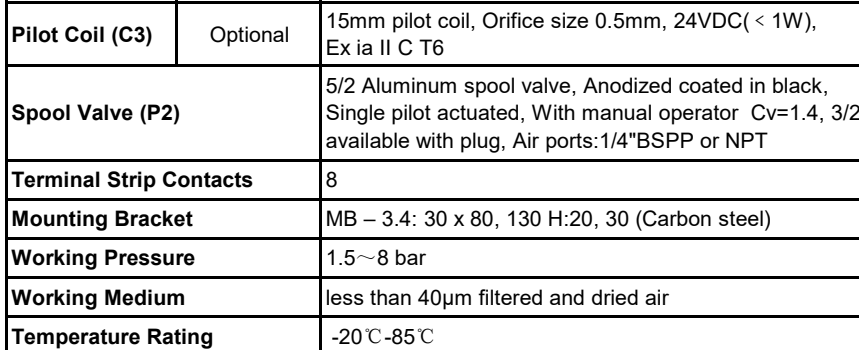


SPECIFICATIONS AND TECHNICAL DATA

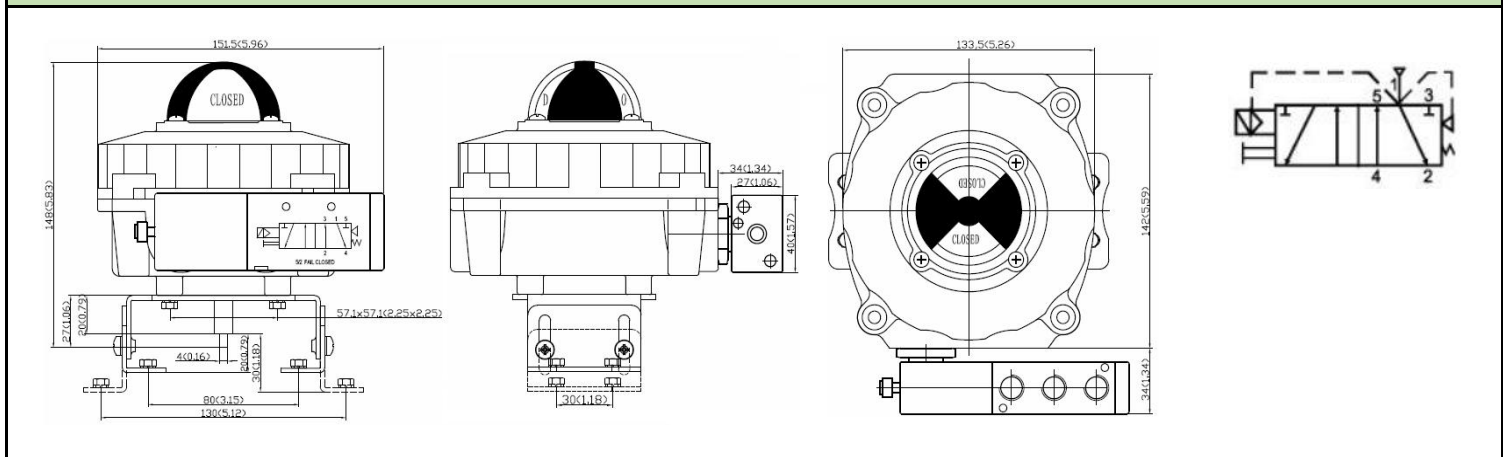
Enclosure	Die-casting aluminum: O-ring sealed	
Coating	Dichromate conversion with polyester powder coating	
O-rings	Buna N	
Environment	IP66	
Area Classification	Ex d IIC T6	
Fasteners	Stainless steel	
Shaft	Stainless steel Namur	
Conduit Entries	2x1/2" or 3/4"BSPP or NPT or 2xM20-1.5	
Pilot Coil (C1)	Standard	15mm pilot coil, Orifice size 1.5mm, 24VDC(2.5W),24/115/230VAC(3VA)
Pilot Coil (C2)	Optional	15mm pilot coil, Orifice size 0.8mm, 24VDC(1W)
Pilot Coil (C3)	Optional	15mm pilot coil, Orifice size 0.5mm, 24VDC(< 1W), Ex ia II C T6
Spool Valve (P2)	5/2 Aluminum spool valve, Anodized coated in black, Single pilot actuated, With manual operator Cv=1.4, 3/2 available with plug, Air ports:1/4"BSPP or NPT	
Terminal Strip Contacts	8	
Mounting Bracket	MB – 3.4: 30 x 80, 130 H:20, 30 (Carbon steel)	
Working Pressure	1.5~8 bar	
Working Medium	less than 40µm filtered and dried air	
Temperature Rating	-20℃ -85℃	

Sensor: Honeywell Mechanical Switches	M2 (2 SPDT)-Standard
Model No.	M3 (3 SPDT)-Optional
	M4 (4 SPDT)-Optional
Operating Voltage	Max: 16A 125-250VAC
Photo	

Wiring Diagram



DRAWING AND DIMENSION



***For continuous improvement of the product, we reserve the right to alter the dimensions, technical data and information included in this data sheet.