

**PRODUCT NAME**

**Flameproof Valve Monitor**

**MODEL NO.**

**ALS410M2**

**DESCRIPTION OF THE PRODUCT**

The ALS410M2 series flameproof valve monitor is a rotary position indication device in HAZARDOUS area(Class I, Division 1, Groups B, C, D T6). Armed with mechanical switch, this device can sense valve position (on/off) for remote PLC or PC indication. The visual indicator on the top of the device can also clearly display the valve position for local detection.

**APPROVED BY**



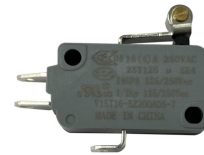
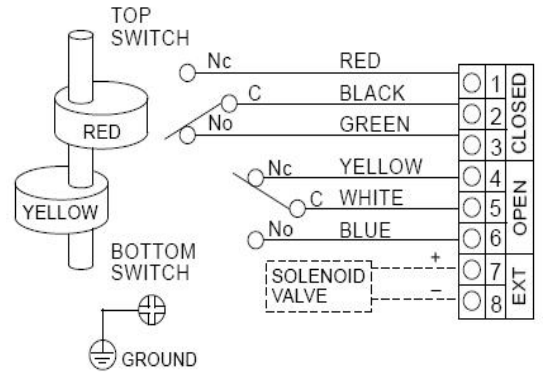
**IP66**



**SPECIFICATIONS AND TECHNICAL DATA**

<b>Enclosure</b>	Die-casting aluminum: O-ring sealed
<b>Coating</b>	Dichromate conversion with polyester powder coating
<b>O-rings</b>	Buna N
<b>Environment</b>	IP66, Type 4, 4X
<b>Area Classification</b>	Class I, Division 1, Groups B, C, D T6
<b>Fasteners</b>	Stainless steel
<b>Shaft</b>	Stainless steel Namur
<b>Conduit Entries</b>	2*3/4" -14 NPT, or 2*M20x1.5 (optional).
<b>Terminal Strip Contacts</b>	8
<b>Mounting Bracket</b>	MB - 3.4: 30 x 80, 130 H:20, 30 (Carbon steel)
<b>Ambient Temperature</b>	-20°C -50°C
<b>Sensor: 2 SPDT V15T16-SZ200A05 Honeywell Mechanical Switches</b>	
<b>Model No.</b>	M2
<b>Operating Voltage</b>	Max. 15A, 250V ac.

**WIRING DIAGRAM**



**DRAWING AND DIMENSION**

