

PRODUCT NAME

Stainless Steel Flameproof Valve Monitor

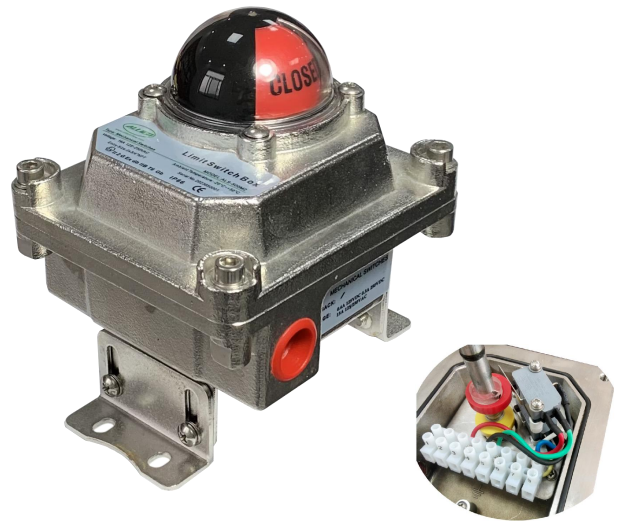
MODEL NO.

ALS600M2

DESCRIPTION OF THE PRODUCT

The ALS600M2 series stainless steel flameproof valve monitor is a rotary position indication device for CORROSIVE and HAZARDOUS (Ex d IIB T6) area. Armed with mechanical switch, this device can senses mechanical position (on/off) of the valve for remote PLC or PC indication. The visual indicator on the top of the device can also clearly display the valve position for local detection.

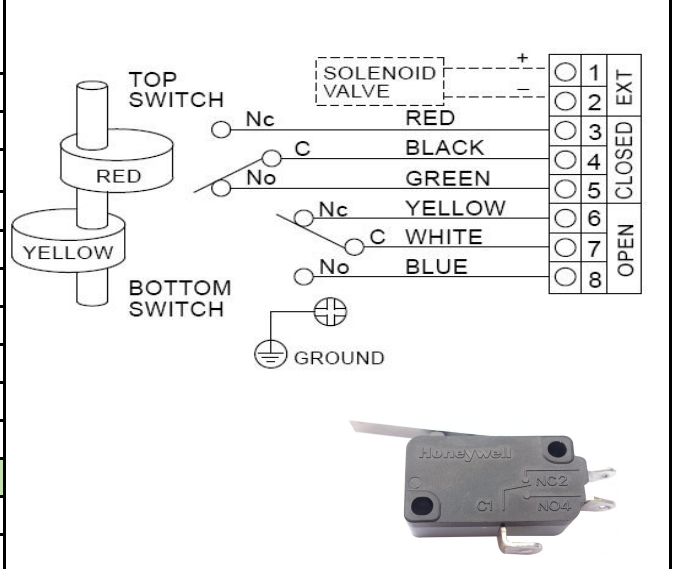
APPROVED BY



SPECIFICATIONS AND TECHNICAL DATA

Enclosure	Stainless steel 316. Resistance to corrosion of chemicals and salty fog: O-ring sealed
O-rings	Buna N
Environment	NEMA 4 4X , IP66
Area Classification	Ex db IIB T6 Gb
Fasteners	Stainless steel
Shaft	Stainless steel Namur
Conduit Entries	Tw o 1/2" BSPP Also available with tw o 1/2" or 3/4"NPT, 3/4"BSPP M20-1.5
Terminal Strip Contacts	8
Mounting Bracket	MB – 3.4: 30 x 80, 130 H:20, 30 (Stainless steel)
Ambient Temperature	-20°C -50°C
Sensor: 2 SPDT Honeywell Mechanical Switches	
Model No.	M2
Operating Voltage	Max: 16A, 125-250 VAC

WIRING DIAGRAM



DRAWING AND DIMENSION

